



1.0 GALLON COFFEE BREWING SYSTEM

CBS 2140 TOUCHSCREEN SERIES

The 1.0 Gallon CBS-2141 / 2142 XTS Touchscreen Series Coffee Brewers provide flexibility in small-to-medium sized venues such as Convenience Stores, Bakery Cafés and Lobbies. Simplify your daily operations and experience total control of this fully featured Extractor® Brewing System via an inviting touchscreen interface display that is intuitive, easy to read and simple to navigate.



CBS-2141XTS
Single Station Brewer*



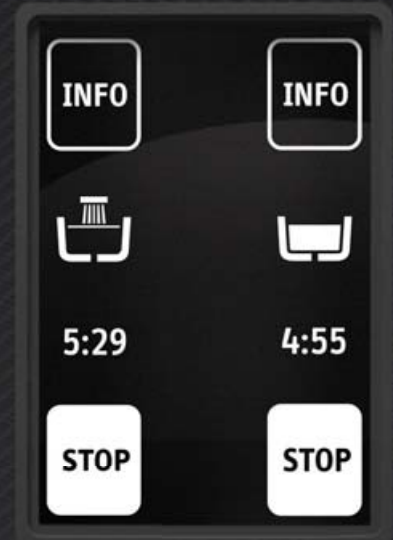
CBS-2142XTS
Dual Station Brewer*

* Shown with L3D-10 Luxus® Dispenser (sold separately)

Perfect taste begins with a simple touch...

User Friendly Touchscreen

Access all controls via an inviting touchscreen interface display that blends intuitive icons with dynamic time and volume data to provide instant visual feedback at any point during programming, diagnostics or the brew cycle.



Streamlined Programming, Diagnostics and Metrics

The Extractor® Touchscreen Operating System (ETOS) was engineered for quick and efficient navigation through set-up, programming, diagnostics and daily operational brewing modes.



Customizable Screens

Customize the start screen to tie your equipment and product offerings into a consistent brand message. You can also create and display individual recipe names for quick and easy access to your most used coffee blends.



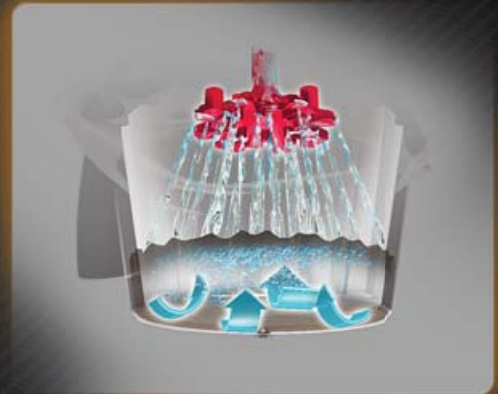
XTS™ Series

Driven by a user friendly touchscreen interface and intuitive software, the XTS series represents the next step in the evolution of FETCO's renown EXTRACTOR® brewing technology.



Cascading Spray Dome™

Hot tank water flows over clog-free channels built into the dome and virtually eliminates spray head scale buildup – a leading reason for service calls.



Legendary Extractor® Control

Take your coffee to its peak level by unlocking the full freshness, aroma and flavor of your taste profile with the legendary EXTRACTOR® brewing technology.



Contemporary Design

Sleek European cabinet design is attractive and fits well in most front-of-house decor typically found in coffee shops, lounges and cafes.



Modern Convenience

Duplicate profiles and parameters to and from any of the batch buttons on a single machine or copy the information to an unlimited number of brewers via a removable SD card (Sold separately).



Luxus® Dispensing

The portable LUXUS® L3D Series Thermal Servers and Dispensers feature high-quality stainless-steel vacuum liners for optimum retention of heat, freshness and flavor.



LUXUS®
Thermal Dispenser

Water Specification

Water Connection Inlet 3/8" Male Flare Fitting	Minimum Flow Rate 1 1/2 gpm [5.7 lpm]	Water Pressure 20-75 psig [138-517 kPa]
---	--	--

Electrical Configuration

Plastic Brew Basket Configuration Code	Stainless Steel Brew Basket Configuration Code	Heater Configuration	Voltage	Phase	Wires	KW	Electrical Connection	Max Amp Draw	Gallon [Liter] / Hour
E214154	E214154M	1 x 1.7 kW	100-120	1	2+G	1.3-1.8	NEMA 5-15P	12.3-14.7	4.4 [16.7] ⁽¹⁾
E214151	E214151M	1 x 2.3 kW	100-120	1	2+G	1.7-2.4	NEMA 5-20P	16.5-19.7	5.8 [22.0] ⁽¹⁾
UNIVERSAL VOLTAGE OPTIONS									
E214171	E214171M	1 x 1.5 kW	120	1	2+G	1.6	NEMA 5-15P	13.0	3.9 [14.8] ⁽¹⁾⁽³⁾
Optional ⁽²⁾	Optional ⁽²⁾	2 x 1.5 kW	120/208-240	1	3+G	3.1	L1 / L2 / N+G	13.0	5.8 [22.0] ⁽¹⁾⁽³⁾
E214172	E214172M	1 x 1.7 kW	120	1	2+G	1.8	NEMA 5-15P	14.7	4.4 [16.7] ⁽¹⁾⁽³⁾
Optional ⁽²⁾	Optional ⁽²⁾	2 x 1.7 kW	120/208-240	1	3+G	3.5	L1 / L2 / N+G	14.7	8.7 [33.0] ⁽¹⁾⁽³⁾
E214173	E214173M	1 x 2.3 kW	120	1	2+G	2.4	NEMA 5-20P	19.7	5.8 [22.0] ⁽¹⁾⁽³⁾
Optional ⁽²⁾	Optional ⁽²⁾	2 x 2.3 kW	120/208-240	1	3+G	4.7	L1 / L2 / N+G	19.7	11.0 [41.6] ⁽¹⁾⁽³⁾

(1) Based on standard factory settings: 5.5 minute brew time; 0% prewet; 200°F water. 1 gallon per batch.

(2) Sold with factory cord & plug for 120 Volt configuration. Optional user connection to a terminal block requiring L1, L2, N and ground to 120/208-240 VAC.

No airport locator for this group. User selectable for optional, dual in-series heater configuration.

(3) 3 liters per batch.

Measurements

Height 34 3/8" [87 cm]	Width 11 3/4" [29 cm]	Depth 20 3/8" [51 cm]	Empty Weight 29 lbs [13 kg]	Filled Weight 55 lbs [25 kg]	Combined Filled Weight 66 lbs [34 kg] <small>BREWER + 1 FILLED L3D-10 DISPENSER</small>	Hot Water Tank Cap. 3.3 gal [12 l]	Shipping Weight: 41 lbs [18 kg]	Shipping Dimensions: 16" x 23" x 29" [40 x 58 x 73 cm]
------------------------------	-----------------------------	-----------------------------	-----------------------------------	------------------------------------	---	--	---------------------------------------	--

Cups per Hour*

8oz.	184
12oz.	123
16oz.	92
20oz.	74

* Approximate based on maximum power setting.

Compatible Dispensers

L3D-10
1.0 Gallon LUXUS®
Thermal Dispenser

Product DIMS:
Height: 21 1/2"
Width: 8"
Depth: 9"
Weight:
Empty: 8 lbs
Filled: 15.9 lbs



L3S-10
1.0 Gallon LUXUS®
Thermal Server*

Product DIMS:
Height: 13 5/16"
Width: 8"
Depth: 10 1/4"
Weight:
Empty: 5.6 lbs
Filled: 12.4 lbs



* Must be used with S3S Serving Stations.

Paper Coffee Filters

#F002
13" x 5"
Paper Coffee Filter



Brew Baskets

#B014218BN2
13" x 5"
Plastic w/ Brown Insert



#B012218B1
13" x 5"
Stainless Steel



Serving Stations

S3S-1 Single
Serving Station



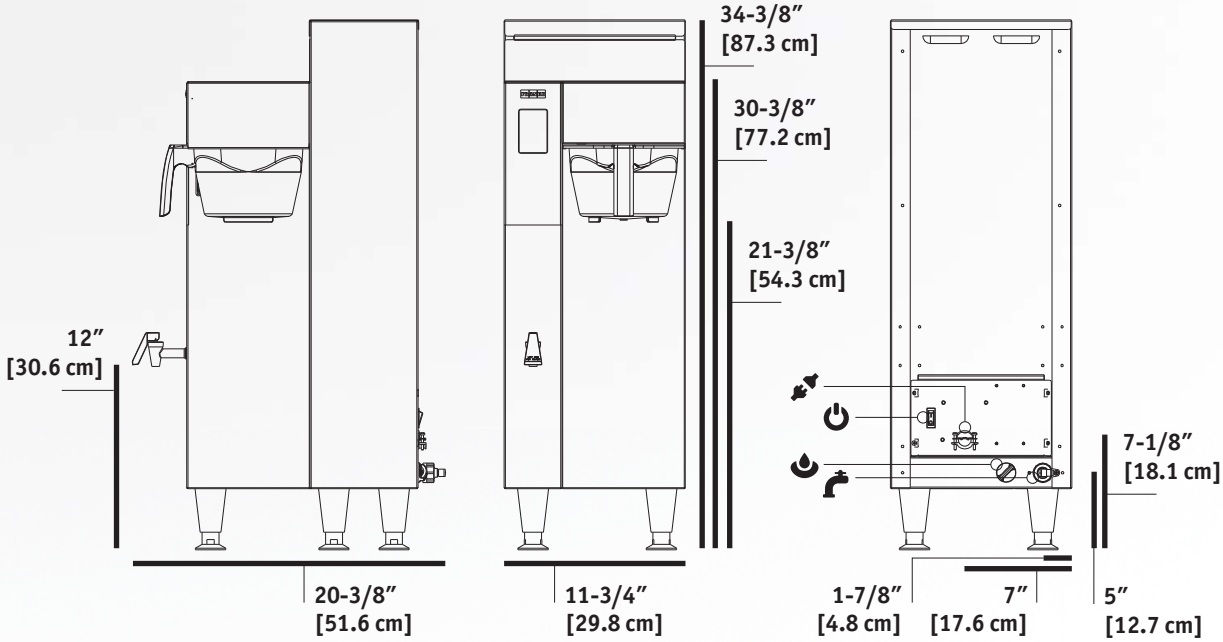
S3S-2 Twin
Serving Station



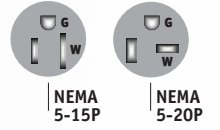
S3S-3 Triple
Serving Station



Dimensional Views



NEMA PLUGS CONFIGURATIONS



SYMBOLS

- Electrical Connector
- On / Off Switch
- Tank Drain
- Water Inlet

Gallery



MANUFACTURED
★ IN THE USA ★

Water Specification

Water Connection Inlet 3/8" Male Flare Fitting	Minimum Flow Rate 1 1/2 gpm [5.7 lpm]	Water Pressure 20-75 psig [138-517 kPa]
---	--	--

Electrical Configuration

Plastic Brew Basket Configuration Code	Stainless Steel Brew Basket Configuration Code	Heater Configuration	Voltage	Phase	Wires	KW	Electrical Connection	Max Amp Draw	Gallon [Liter] / Hour
E214251	E214251M	2 x 3.0 kW	200-240	1	2+G	4.2-6.1	Hardwired	21.3-25.5	14.0 [53] ⁽¹⁾

(1) Based on standard factory settings: 5.5 minute brew time; 0% prewet; 200°F water. 1 gallon per batch.

Measurements

Height 34 3/8" [87 cm]	Width 19 3/4" [50 cm]	Depth 20 3/8" [51 cm]	Empty Weight 47 lbs [21 kg]	Filled Weight 92 lbs [41 kg]	Combined Filled Weight 114 lbs [51 kg] <small>BREWER + 2 FILLED L3D-10 DISPENSERS</small>	Hot Water Tank Cap. 5.8 gal [22 l]	Shipping Weight: 58 lb [26 kg]	Shipping Dimensions: 23" x 25" x 29" [58 x 63 x 73 cm]
------------------------------	-----------------------------	-----------------------------	-----------------------------------	------------------------------------	---	--	--------------------------------------	--

Cups per Hour*

8oz.	224
12oz.	149
16oz.	112
20oz.	90

* Approximate based on maximum power setting.

Compatible Dispensers

L3D-10
1.0 Gallon LUXUS®
Thermal Dispenser

Product DIMS:
Height: 21 1/2"
Width: 8"
Depth: 9"
Weight:
Empty: 8 lbs
Filled: 15.9 lbs



L3S-10
1.0 Gallon LUXUS®
Thermal Server*

Product DIMS:
Height: 13 5/16"
Width: 8"
Depth: 10 1/4"
Weight:
Empty: 5.6 lbs
Filled: 12.4 lbs



* Must be used with S3S Serving Stations.

Paper Coffee Filters

#F002
13" x 5"
Paper Coffee Filter



Brew Baskets

#B014218BN2
13" x 5"
Plastic w/ Brown Insert



#B012218B1
13" x 5"
Stainless Steel



Serving Stations

S3S-1 Single
Serving Station



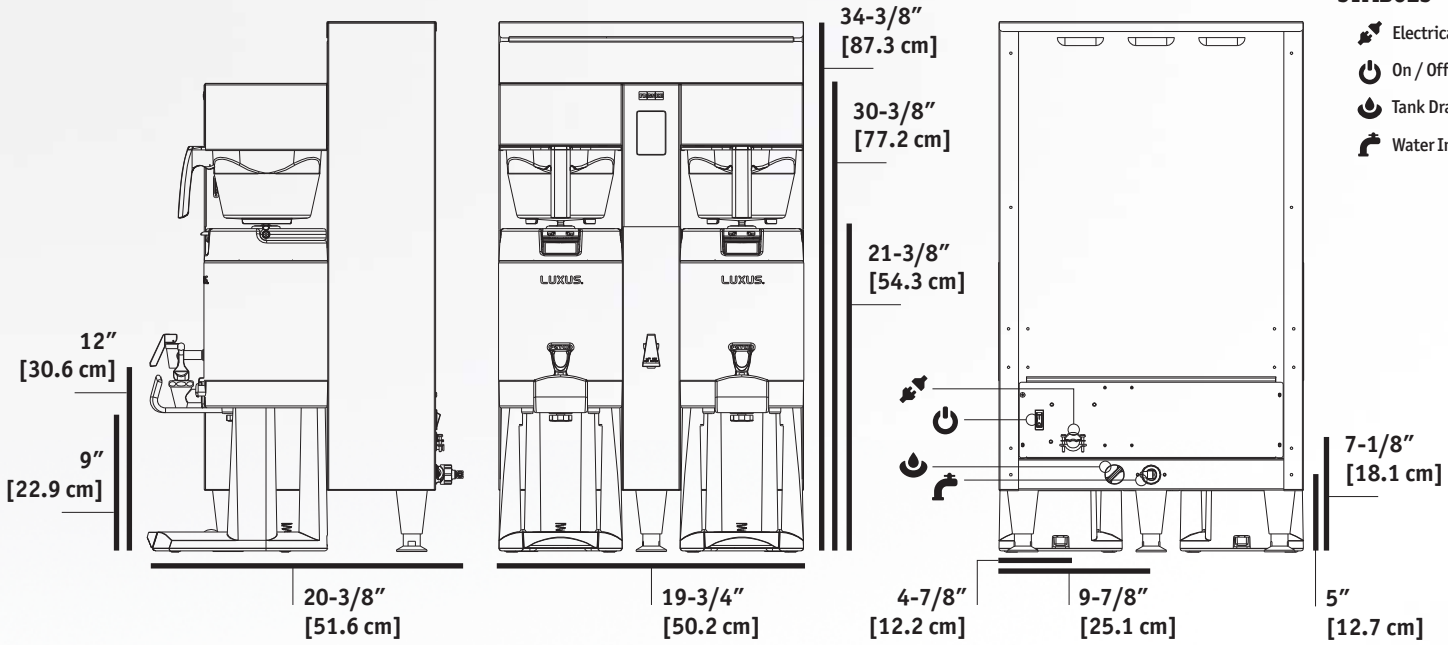
S3S-2 Twin
Serving Station



S3S-3 Triple
Serving Station



Dimensional Views



Gallery



MANUFACTURED
★ IN THE USA ★

Features & Benefits



	Feature	Benefit
1	Touchscreen Interface	Allows for quick and easy access to brew controls.
2	Brew Basket Sensors	Automatically discontinues operation of brew cycle if basket is removed.
3	Mixed Material Construction	Mixed material is attractive and comfortable in any front-of-house setting.
4	Manual Water Faucet	Safely dispenses hot water away from steam and brew basket.
5	Stainless Steel Finish	Withstands the harshest foodservice environments and is durable and easy to clean.



Dispensers sold separately.

FETCO

© Copyright 2014 FETCO®, Driven to Innovation™
is a mark of Food Equipment Technologies Company.

 fetco.com

SS14005

 847.719.3000
1.800.338.2699 USA
 847.719.3001

 Food Equipment Technologies Co.
600 Rose Road
Lake Zurich, IL 60047
USA